

## Hotel Tahiti Nui 3\* - Tahiti

Being only a few minutes away from the airport and straight in the heart of Papeete, Hotel Tahiti Nui offers immediate access to all the touristic sites of the capital, such as the waterfront, the business district, the traditional market...

The hotel is perfect for an overnight stop between two islands of Polynesia and fits very well for long-stay thanks to its rooms with multiple services. The hotel has a spa, a gym and a swimming pool.

Being located in the city, the road noise can be annoying but the mountain view rooms do not suffer from this problem and the proximity of the city offers many advantages such as access to the nightlife of the city of Papeete, the "roulottes" (trailers) and bars.

### Location

15 minutes from airport

Near Town center

Transfer by bus or private car with our services

No welcome amenities



### Room Categories

12	Standard Room - Street View	3A	No twin rooms in that category
27	Standard Room - Mountain View	3A	Twin Rooms : Mountain View only    Wheelchair access
5	Deluxe Room	3A	
18	Junior Suite without Kitchenette	4A	
18	Junior Suite with Kitchenette	4A	
10	Executive Suite	5A	

Check-In 13h00 - Check-Out 11h00

### Dining - Entertainment Features

**LE VELVET** restaurant, 80 seats

Lunch 11h30 - 13h30, Dinner 19h00 - 22h00

**CHOCO LATTE** restaurant/bar, about 60 seats

Breakfast 06h00 - 10h30

A few dishes well identified on the menu will be subject to a supplement

**CHOCO LATTE** 17h00 - 23h00

One conference room of 120 seats and one meeting room of 16 seats.

### Facilities and Activities

#### INTERNET

**WIFI** available in the lobby and cable connection in the room with your own laptop.

**Free access.**

**Fitness Center** Open Monday - Saturday from 9h00 - 18h00  
**Dhana Spa** Massages, Body Care, Manicure/Pedicure, Jacuzzi, Steam Room.  
Open Monday - Saturday from 9h00 - 18h00.

We strongly recommend that you pre-book some activities in advance, only way to guarantee availability.

**Free activities:** Fitness Center,

**Other Facilities:** Business Center, Ice Machine, Laundry Service, Spa, Swimming Pool, Waiting Lounge,

---

## Exclusive Services

---

### Children

No Children Facilities.

---

## Important Remarks

Information on this Factsheet is subject to change without prior notice.

**Accepted Credit Cards:** Visa, Mastercard, American Express, Diners Club, JCB

---

## Room Facilities

Baby Bed upon request, Air Conditionning, Balcony, Coffee / Tea Facilities, Hair Dryer, Hot Water, Iron, Mini Bar, Room Service, In Room Safety Box, Shower, Telephone, TV,

---

### Standard Room - Street View

Air-conditionned comfortable room decorated with modern inspiration and equipped with internet connection, mini-bar and a private balcony. Those units have a direct view on the street.



Category not available for TWIN configuration.

**Maximum Occupancy:** 3A

**Bed Configuration:** 1 queen + 1 sofa bed

**More Info:** Surface 30m<sup>2</sup>

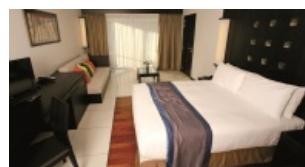
**Additional facilities:** N/A,

---

### Standard Room - Mountain View

Air-conditionned comfortable room decorated with modern inspiration and equipped with internet connection, mini-bar and a private balcony. Those units provide a nice view on the mountains of the island

\* All Twin Standard Rooms are Mountain View \*\*There are no Twin Standard Rooms with Street view \*\*



Wheelchair access

**Maximum Occupancy:** 3A

**Bed Configuration:** 1 queen or 2 single beds 140cm + 1 sofa bed

**More Info:** Surface 30m<sup>2</sup>

**Additional facilities:** N/A,

---

## Deluxe Room

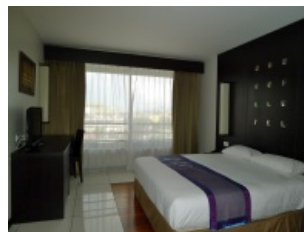
Same layout as Standard rooms, with a bathtub (instead of a shower)  
All Deluxe Room are street view units

**Maximum Occupancy:** 3A

**Bed Configuration:** 1 queen or 2 single beds 140cm + 1 sofa bed

**More Info:** Surface 30m<sup>2</sup>

**Additional facilities:**



## Junior Suite without Kitchenette

This spacious unit features a separate living/dining room, a kitchenette equipped with a refrigerator (but no cooking facilities available in this category)  
Bathroom with bath tub and shower, separate toilet, and a private balcony.

Main bedroom connecting with a standard room on request.

**Maximum Occupancy:** 4A

**Bed Configuration:** 1 queen + 1 sofa bed (+ 1 rollaway bed)

**More Info:** Surface 58m<sup>2</sup>

**Additional facilities:** Bathtub, Connecting Rooms,



## Junior Suite with Kitchenette

This spacious unit features a separate living/dining room, a kitchenette equipped with a refrigerator and cooking facilities (a cooktop, an oven, and a cooker hood)  
Bathroom with bath tub and shower, separate toilet, and a private balcony.

Main bedroom connecting with a standard room on request.

**Maximum Occupancy:** 4A

**Bed Configuration:** 1 queen + 1 sofa bed (+ 1 rollaway bed)

**More Info:** Surface 58m<sup>2</sup>

**Additional facilities:** Bathtub, Connecting Rooms,



## Executive Suite

Very spacious and comfortable suite including a living room, a kitchen, dining area, and 2 Bed rooms (1 with king size bed, the other with queen size bed) on the first floor.

The Suite is also featuring 2 bathrooms and is equipped with internet connection and a private balcony.

**Maximum Occupancy:** 5A

**Bed Configuration:** 1 king + 1 queen + 1 sofa bed

**More Info:** Surface 80m<sup>2</sup>

**Additional facilities:** Bathtub,



