

Hotel Manava Beach Resort & Spa Moorea - 4*

This human-scale place, more Hotel than genuine "Resort", offers a popular Polynesian friendliness and a convenient location: adjacent to the typical Maharepa Shopping Center, guests can independently immerse themselves in island life.

Restaurant with Polynesian shows, bar, large swimming-pool, spa, diving center, shop, a wide range of land/lagoon activities is available from the hotel.

Concerning accommodation, several categories are available to you, each of them are decorated in a polynesian style. In the ascending order of prices: rooms, bungalows with privat garden and small swimming pool (the most requested), beach bungalows and of course overwater bungalows.

Location

10 min from airport

15 min from pier

5 min from Moorea Golf

Transfer by bus or private car with our services



Welcome amenities: Welcome refreshing towel and drink

Specified Welcome Gifts may be replaced without notice by others with same value.



Room Categories

18	ABF Garden View Room	2A+1C	
6	ABF Garden View Duplex	4A or 2A+3C	
28	ABF Premium Garden Pool Bungalow	3A or 2A+2C	Our Preferred Category! Wheelchair accessible
8	ABF Beach Bungalow	3A or 2A+2C	
10	ABF Overwater Bungalow	3A or 2A+2C	
18	ABF Premium Overwater Bungalow	3A or 2A+2C	

Check-in 14:00 Check-out 11:00

Transit rooms (with bathroom and bed) at disposal, subject to availability:

until 12:00pm : free ; from 12:00pm - 2:00pm: approx. 18 euros ; from 2:00 pm - 5:00pm: approx. 42 euros

Shower at disposal in the lobby: free access.

Dining - Entertainment Features

MAHANA'I - Local and International Cuisine

Breakfast 06H30 - 10H00, Lunch 12H00 - 14H00, Dinner 18H30 - 21H30

Snack 14H00 - 21H30

Polynesian buffet with Show on Wednesday : 18H30 - 21H30 (Buffet will be served depending on hotel's occupancy) and show: 19H30

International buffet with Show on Saturday : 18H30 - 21H30 and show: 20H00

Room Service available 6H30 - 10H30 / 12H00 - 21H30

AUTERA'A - Main bar

10H00 - 23H00 (midnight friday and saturday)

LOUNGE BAR - Deluxe Bar

Open from Friday to Sunday only.
16H00 - 23H00 (midnight during busy nights)

2 conference rooms available : respectively 90 pax and 30 pax

Facilities and Activities

Internet

Free WIFI available throughout the property (public areas and bungalows). 1 computer available in the lobby.

Tours and activities desk 7H30 - 16H00

Moorea Blue Diving Center 07H00 - 08H00 and 11H30 - 16H30

Toanui Coral Nursery : a coral regeneration project down the overwater bungalows. This site encourages the proliferation of marine life whose beauty is so easily enjoyed with simple snorkeling equipment.

The Manea Spa specializes in massages and treatments using traditional Polynesian methods and 100% natural products from the island's flowers and plants, including the famous monoï oils.

Enjoy the solar heating pool "Rumi Avai" where you can discover the pleasures of some aquatic massages, the only ones on the island.
Open everyday 9H00 - 18H00

Romantic Touches such as special welcomes, Flower lei, Fruit Basket, Champagne, Wine...

Romantic Dinners as a dinner under the stars

Weddings Ceremonies on the beach, on private boat...

Free Activities: Aquagym, Badminton, Beach Towels Provided, Kayaks, Canoe, Petanque, Paddle Board, Snorkeling Equipment, Tennis Table, Volleyball,

Other Facilities: Power Adaptor 220V-110V, Ice Machine, Laundry Service, Swimming Pool,

Children

Set of toys available, including beach toys. Children life jackets, children size snorkeling gear. In room, welcome candies basket. Children menu at restaurant.

Important Remarks

Information on this Factsheet is subject to change without prior notice.

Accepted Credit Cards at the Resort - Visa, Mastercard, American Express, JCB, local credit cards, CUP (for direct payment only)



- | | | |
|--|--|--|
| A - Reception – Hall - Boutique | F - Garden View Rooms and Duplex /
<i>Chambres et Duplex Vue Jardin</i> | J - Premium Overwater Bungalows
<i>/Bungalows Pilotis Premium</i> |
| B - Conference Lounge /
<i>Salon de Conférences</i> | G - Premium Garden Pool Bungalows
<i>/Bungalows Jardin avec Piscine
Premium</i> | K – Infinity Swimming Pool /
<i>Piscine à débordement</i> |
| C - Restaurant «Mahanai»
Restaurant «Le Matiehani» | H - Beach Bungalows /
<i>Bungalows Plage</i> | L - Diving center / <i>Centre de Plongée</i> |
| D - Bar «Auterā'a» | I - Overwater Bungalows
<i>/Bungalows Pilotis</i> | M – Coral Nursery / <i>Nurserie de
Corail</i> |
| E - Manea Spa | | |

Room Facilities

Air Conditionning, Cable TV, Instant Coffee/Tea Facilities, DVD Player, Hair Dryer, Iron, Minibar filled on request, Private Bathroom/WC, In Room Safety Box, Telephone, Terrace, Local Broadcast TV,

ABF Garden View Room

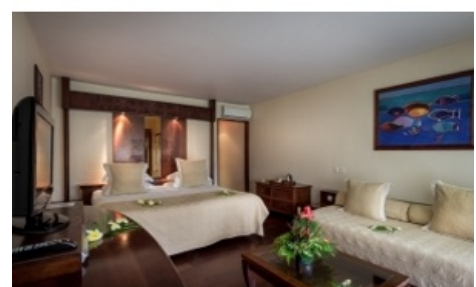
First price category. These units are located in the main building (1st and 2nd floor), about 50m from the beach, and have a nice view on the tropical garden of the hotel from the terrace. They are equipped with every comfort expected of a 4 star establishment.

Maximum Occupancy: 2A+1C

Bed Configuration: 1 king bed or 2 single beds + 1 single bed

More Info: Surface 44m²

Additional Facilities: Connecting Rooms, Shower, NO Turndown service,



ABF Garden View Duplex

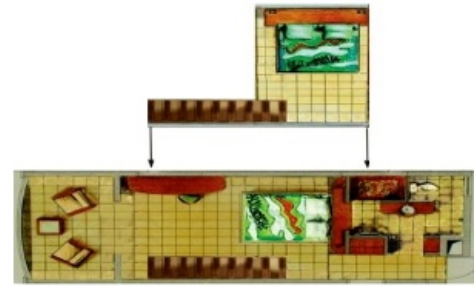
The Garden View Duplex are perfect for families in so far as they feature a king size bed on a mezzanine, and 2 single beds downstairs.
1 bathroom located downstairs.

Maximum Occupancy: 4A or 2A+3C

Bed Configuration: 1 king bed + 2 single beds

More Info: Surface 59m²

Additional Facilities: Shower, NO Turndown service,



ABF Premium Garden Pool Bungalow

Our favorite category! These bungalows are equipped with a small pool in a private garden not overlooked for maximum privacy.
A cocoon.

Wheelchair access in some units.

All categories of bungalow feature the same layout.

Maximum Occupancy: 3A or 2A+2C

Bed Configuration: 1 king bed or 2 single beds + 1 single bed

More Info: Surface 48m²

Additional Facilities: Connecting Rooms, Private Pool, Shower, NO Turndown service,



ABF Beach Bungalow

These units stand on a white sand beach, just a few meters from the lagoon.
All categories of bungalow feature the same layout.

Maximum Occupancy: 3A or 2A+2C

Bed Configuration: 1 king bed + 1 single bed

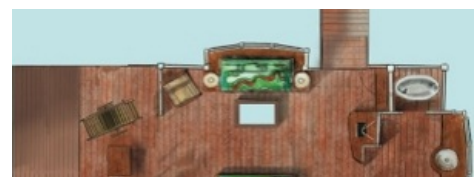
More Info: Surface 44m²

Additional Facilities: Shower, NO Turndown service,



ABF Overwater Bungalow

Overwater Bungalows offer a pleasant view on the lagoon and on Moorea mountains. These units also offer direct access to the lagoon (shallow water).
All categories of bungalow feature the same layout.

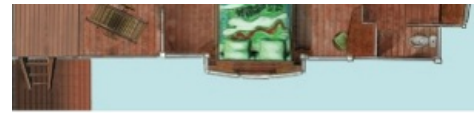


Maximum Occupancy: 3A or 2A+2C

Bed Configuration: 1 king bed + 1 single bed

More Info: Surface 48m² / 517 sq foot. Water depth is about a meter deep

Additional Facilities: Bathtub, Private Ladder to Lagoon, Glass Bottom Table, Turndown service,



ABF Premium Overwater Bungalow

Best category of the hotel.

Premium Overwater bungalows have a panoramic view on the blue lagoon of Moorea. These units also offer a direct access to the lagoon (in deep water). All categories of bungalow feature the same layout.

Maximum Occupancy: 3A or 2A+2C

Bed Configuration: 1 king bed + 1 single bed

More Info: Surface 517 sq foot (48m²). Depth of the water is estimated at about 1.80m deep before the drop-off.

Additional Facilities: Bathtub, Private Ladder to Lagoon, Glass Bottom Table, Turndown service,



Last Update: November 2016