

## Hotel Maitai Lapita Village 3\* - Huahine

Located near the main village, the environment friendly Hotel Maitai Lapita Village Huahine is built on a 3 hectares land encompassing a small white sand beach, a fresh water lake dotted with water-lilies and an archaeological site still uncleared.

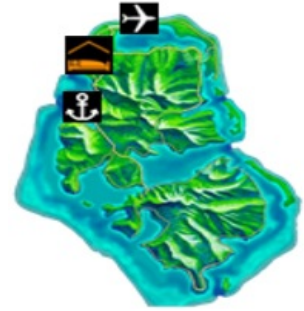
Facing the crystal clear water of the lagoon, the restaurant, bar and pool offer gorgeous views on the island, on Raiatea-Tahaa, Bora Bora and also magnificent sunsets.

The resort spacious bungalows are modelled after the houses of former Polynesian canoes; they combine local, traditional, modern and recycled materials. Unique in French Polynesia: the Premium Lake Bungalows built around a fresh water lake.

### Location

5 minutes from airport et 10 minutes from the main village  
Arrival/departure Transfers by bus

Welcome at the hotel with a fruit juice and oshiburi  
Specified Welcome Gifts may be replaced without notice by others with same value.



### Room Categories

12	ABF Garden Bungalow	2A+1C	
5	ABF Premium Garden Bungalow	3A+1C	1 unit equipped for the disabled
15	ABF Premium Lake Bungalow	3A+1C	1 unit equipped for the disabled

Check-in 14H00 Check-out 11H00

No transit room available.  
Shower room available. Free of charge.

### Dining - Entertainment Features

OMAI RESTAURANT, International & Polynesian Cuisine, by the pool - 80 seats  
Breakfast 06H00 - 09H30, Lunch 11H45 - 14H00, Snacks 14H30 - 18H00, Dinner 18H45 - 21H30

Dinner shows available once or twice a week according to hotel occupancy.

ROOM SERVICE Not Available

OAOA BAR, by the pool, close to the beach, 10H00 - 22H00

1 multipurpose room can be arranged for conference

### Facilities and Activities

## INTERNET

WIFI available in all the property (common areas and bungalows) and 1 computer at the lobby

Paying access - approx. 4 Euro / 1H ; 17 Euro / 5H ; 33 Euro / 11H

(rates subject to change without notice)

Free WIFI in Premium Lake Bungalow

Activities to book at the Front Office.

Museum inside the hotel displaying archaeological artifacts discovered on the resort compound

Native and medicinal plants and trees are an integral part of the hotel landscape, including food plants such as taro roots, cassava roots, fafa (local spinach), bananas, papayas, vanilla and ornamental plants. A book is available in the hall of the hotel, including the list and description of all plants available in the garden. Make your own itinerary around the garden...

In Room Touches - Fruit platter, Bottle of wine, Champagne ...

Romantic dinners at hotel restaurant

Polynesian Wedding Ceremonies

**Free Activities:** Beach Towels Provided, Kayaks, Canoe, Snorkeling Equipment,

**Other Facilities:** Baby Sitting, Pantry & Sundry Shop, Ice Machine, Laundry Service, Swimming Pool, Smoking Area(s),

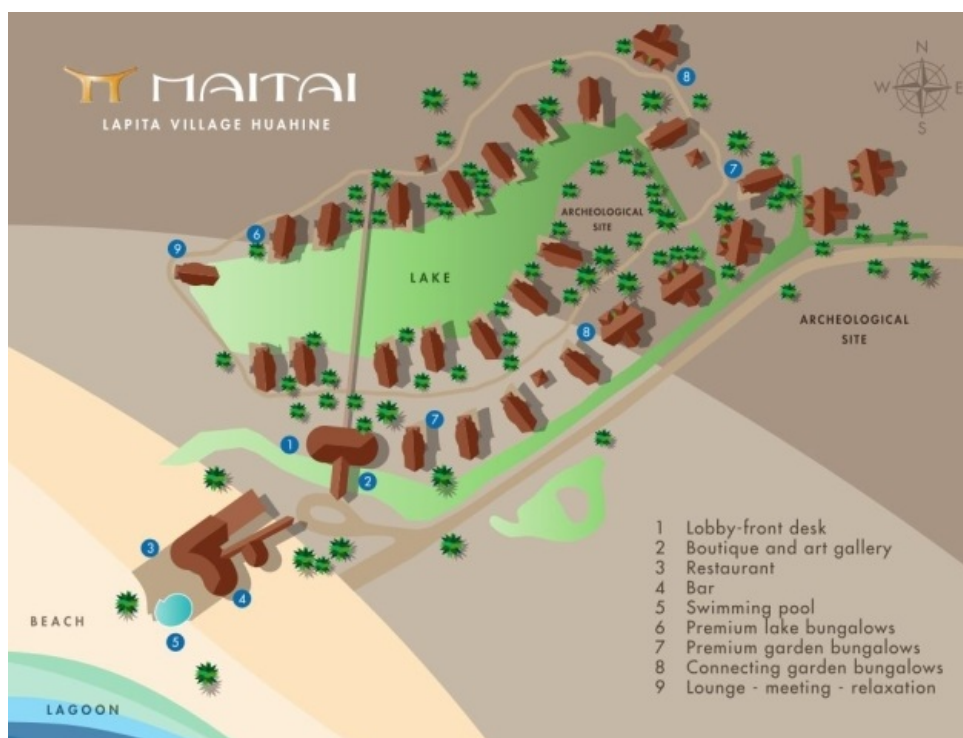
## Children

Parlour games available at the Front Office.

## Important Remarks

Information on this Factsheet is subject to change without prior notice.

Accepted Credit Cards - Visa, Mastercard, American Express, JCB, Cup (direct payment only)



## Room Facilities

Air Conditionning, Cable TV, Instant Coffee/Tea Facilities, Hair Dryer, Minibar filled on request, Private Bathroom/WC, In Room Safety Box, Shower, Outdoor smoking only, Telephone, Terrace,

## ABF Garden Bungalow

Garden Bungalows are built in pairs, with 2 connecting units under the same roof, but that can be booked separately. They are the ideal units for families.

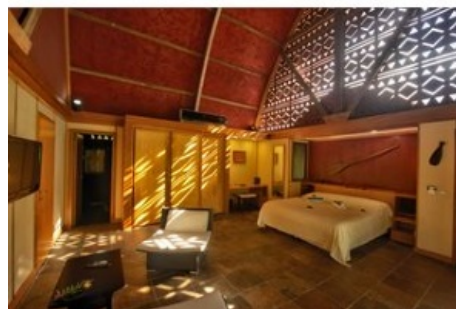


**Maximum Occupancy:** 2A+1C

**Bed Configuration:** 1 king bed or 2 single beds (+ 1 rollaway bed)

**More Info:** Interior of Bungalow 39m<sup>2</sup> + Terrace 13m<sup>2</sup>

**Additional Facilities:** N/A,



### ABF Premium Garden Bungalow

Comfortable units with a large terrace, located in the resort lush garden, the Premium Garden Bungalows are spacious and designed according to the houses of the ancient Polynesian outrigger canoes. The decoration is inspired by the ancestral pottery art of the Lapita culture.

1 unit equipped for the disabled

**Maximum Occupancy:** 3A+1C

**Bed Configuration:** 1 king bed or 2 single beds + 1 sofa bed (+ 1 pull-out bed)

**More Info:** Interior of Bungalow 42m<sup>2</sup> + Terrace 38m<sup>2</sup>

**Additional Facilities:** N/A,



### ABF Premium Lake Bungalow

The Premium Lake Bungalows are dotted around the natural fresh water lake of the resort and are surrounded by lush vegetation. The large terrace overlooks the lake imbued with an atmosphere of peace and serenity.

1 unit equipped for the disabled

**Maximum Occupancy:** 3A+1C

**Bed Configuration:** 1 king bed or 2 single beds + 1 sofa bed (+ 1 pull-out bed)

**More Info:** Interior of Bungalow 42m<sup>2</sup> + Terrace 38m<sup>2</sup>

**Additional Facilities:** N/A,

